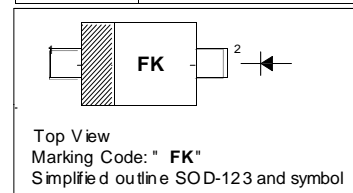


## CRS01W Surface Mount Schottky Barrier Diode

### PINNING

PIN	DESCRIPTION
1	Cathode
2	Anode

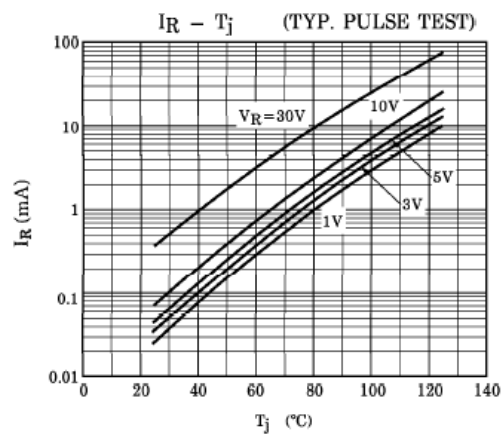
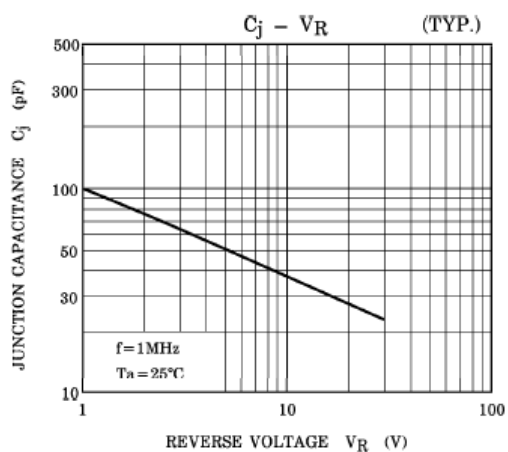
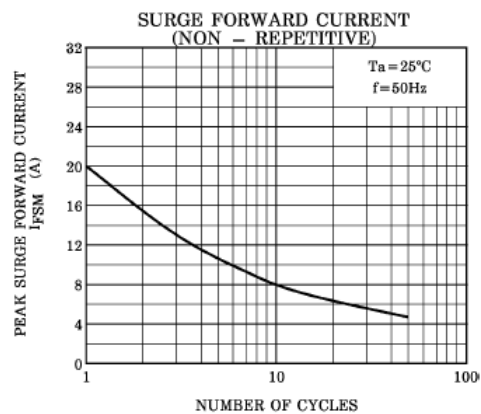
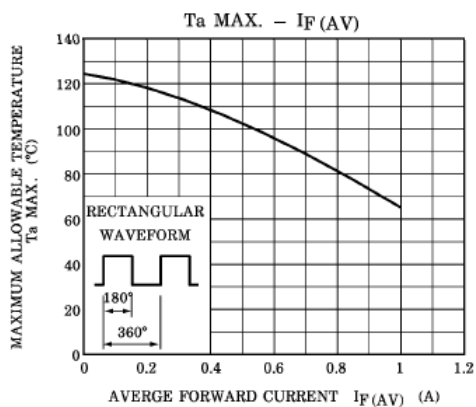
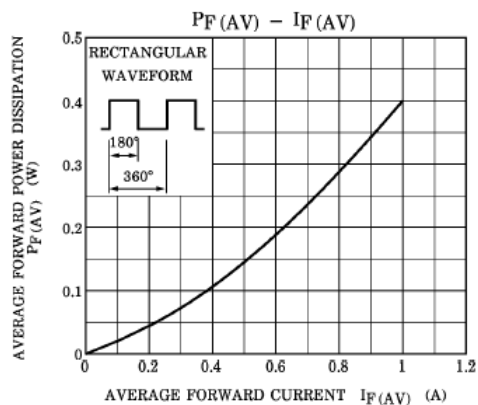
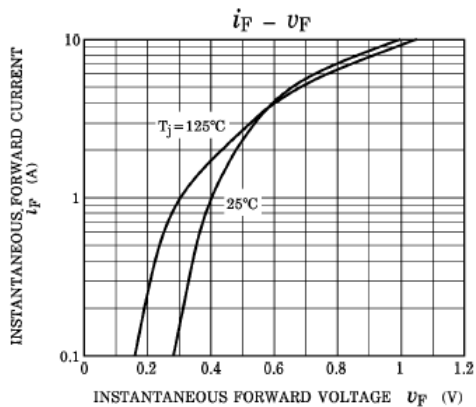


### Absolute Maximum Ratings ( $T_a = 25\text{ }^\circ\text{C}$ )

Parameter	Symbol	Value	Unit
Peak Repetitive Reverse Voltage	$V_{RRM}$	30	V
Average Forward Current	$I_{F(AV)}$	1.0	A
Non-Repetitive Peak One Cycle Surge Forward Current at 50 Hz at 60 Hz	$I_{FSM}$	20 22	A
Junction Temperature Range	$T_j$	- 40 to + 125	$^\circ\text{C}$
Storage Temperature Range	$T_{stg}$	- 40 to + 125	$^\circ\text{C}$

### Characteristics at $T_a = 25\text{ }^\circ\text{C}$

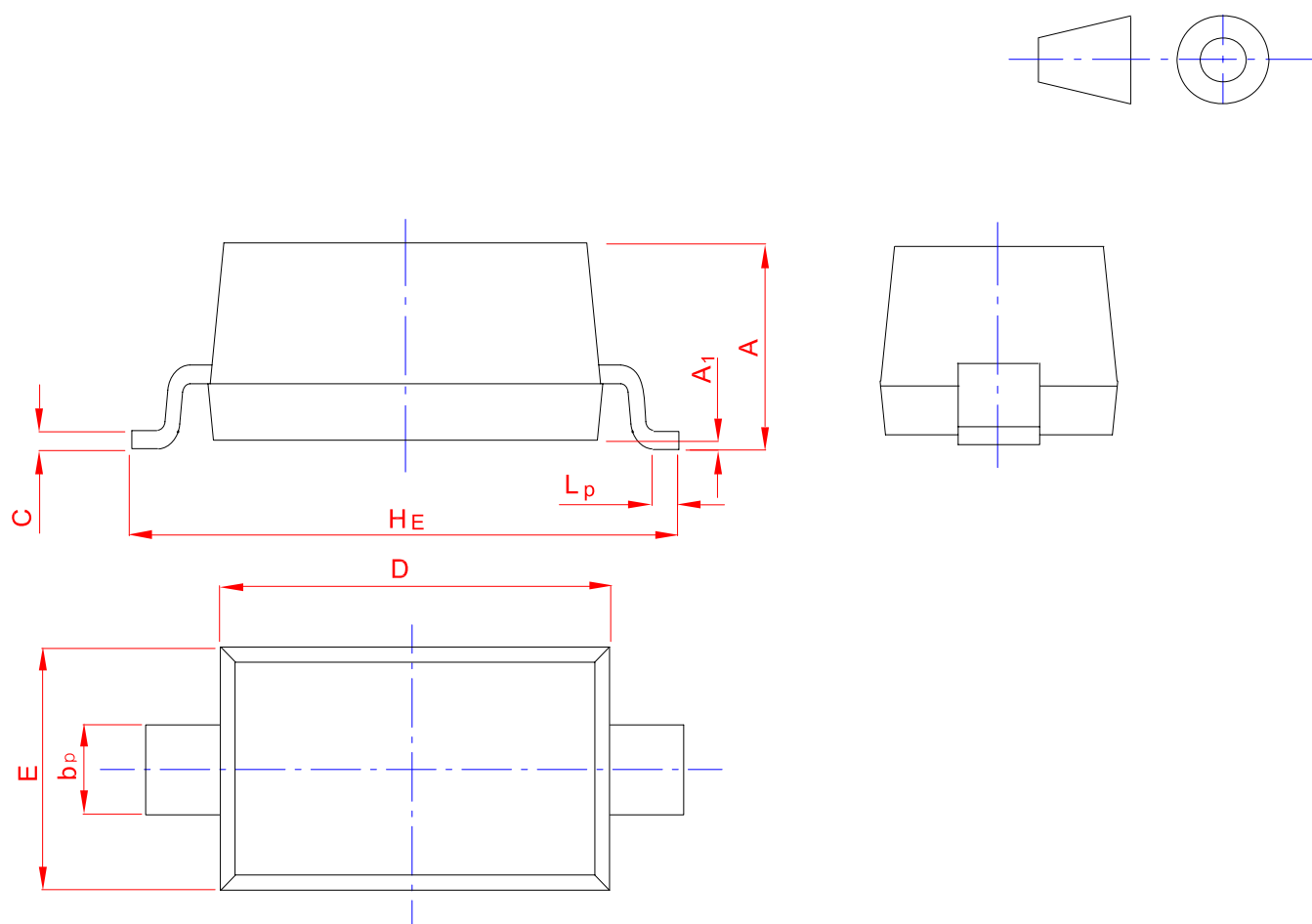
Parameter	Symbol	Typ.	Max.	Unit
Peak Forward Voltage at $I_{FM} = 0.1\text{ A}$ at $I_{FM} = 0.7\text{ A}$ at $I_{FM} = 1\text{ A}$	$V_{FM}$	0.25 0.33 0.36	- 0.37 -	V
Repetitive Peak Reverse Current at $V_{RRM} = 30\text{ V}$	$I_{RRM}$	-	1.5	mA
Junction Capacitance at $V_R = 10\text{ V}$ , $f = 1\text{ MHz}$	$C_J$	40	-	pF



# PACKAGE OUTLINE

Plastic surface mounted package; 2 leads

SOD-123



UNIT	A	b <sub>p</sub>	C	D	E	H <sub>E</sub>	A <sub>1</sub>	L <sub>p</sub>
mm	1.20	0.60	0.135	2.75	1.65	3.85	0.10	0.50
	0.90	0.50	0.100	2.55	1.55	3.55	0.01	0.20